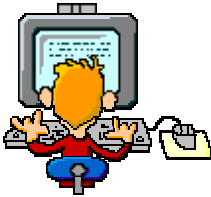


RESTRICTION OF ACCESS TO INAPPROPRIATE MATERIAL



There are two simple ways to configure your computer to limit children's access to inappropriate sites. One is available free of charge while the other requires the purchase of a software.

Configuring your browser (Version 5.0 and more recent version of Internet Explorer):

1. Open Internet Explorer (standard with all versions of Windows).
2. In the menu bar, select **Tools**, then **Internet Options**.
3. Select the **Content** tab.
4. Select **Enable**, in the Content Advisor, to control the content that can be viewed on the computer.
5. Select the type of content that you wish to limit by choosing **Language, Nudity, Sex** or **Violence**.
6. Using the indicator in the middle of the screen, set the ratings level for what can be viewed: Level 0 = No tolerance, Level 4 = Total tolerance.
7. Select **Apply**, then **OK**.
8. Create a password that will allow you to return to the Content Advisor each time you deem it necessary. Only you should know the password.
9. If your child selects an inappropriate page according to the criteria you have established, a message will appear to inform him that he is unauthorized to view this site without the supervisor's password.

Be aware: Configuring your computer in this manner is not without faults. New websites are created everyday that dodge the criteria set in the Content Advisor. **Parental Supervision is recommended every time your children are surfing the net.**

Installing a Parental Control Software:

You can buy this type of software at any computer store. A salesperson can help you to determine which software is compatible with the type of computer you have. Software of this nature is generally very easy to install. Make sure that the software company has a website which allows you to update it as often as needed.